

TOWN OF HANLEY

BYLAW NO 06/16

**A BYLAW TO AMEND THE WATERWOLF GROWTH MANAGEMENT PLAN
(DISTRICT PLAN)**

The Council of the Town of Hanley in the Province of Saskatchewan enacts to amend the WaterWolf Growth Management Plan (District Plan) as follows:

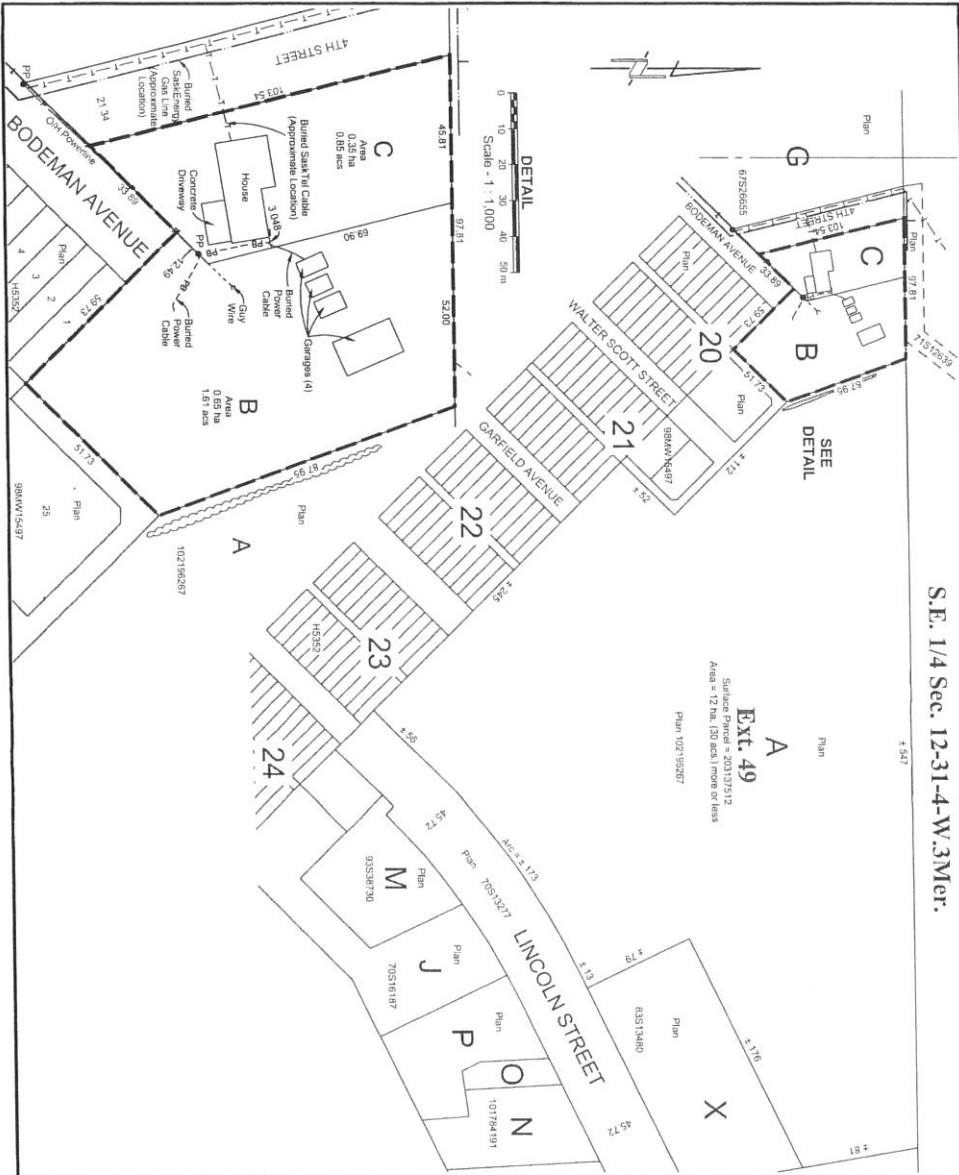
1. Section 13, Part 10.2.3 Land Use Map be amended to reflect re-designation of Parcels B and C, as per the Plan of Proposed Subdivision drafted by Daniel Codling S.L.S. of Altus Geomatics, dated July 17, 2015, which is attached as Appendix A and forms part of this bylaw, to Existing Residential-R1 from Urban Holding.
2. Section 13, Part 10.2.3 Land Use Map is amended to replace the Land Use Map with the updated map attached as Appendix B and forms part of this bylaw.
3. This Bylaw comes into force and effect on the date of final approval by the Minister of Government Relations.

(SEAL)

MAYOR

ADMINISTRATOR

S.E. 1/4 Sec. 12-31-4-W.3Mer.



PLAN OF PROPOSED SUBDIVISION
 of Part of
 Block A, Plan 102196267
 N.E. 1/4 Sec. 1 - Twp. 31 - Rge. 4 - W3Mer
 Town of Hanley
 Saskatchewan
 D.L. Codling, S.L.S.
 2015
 Scale 1:2500

APPENDIX A

OWNER(S):
 Mafimne Prosofsky
 Mafimne Prosofsky

Measurements are in metres and decimals thereof.
 Measurements are approximate and may vary by 50.8m.
 Area to be approved is outlined in bold dashed line
 and contains 1.00 ha (2.46 acs)

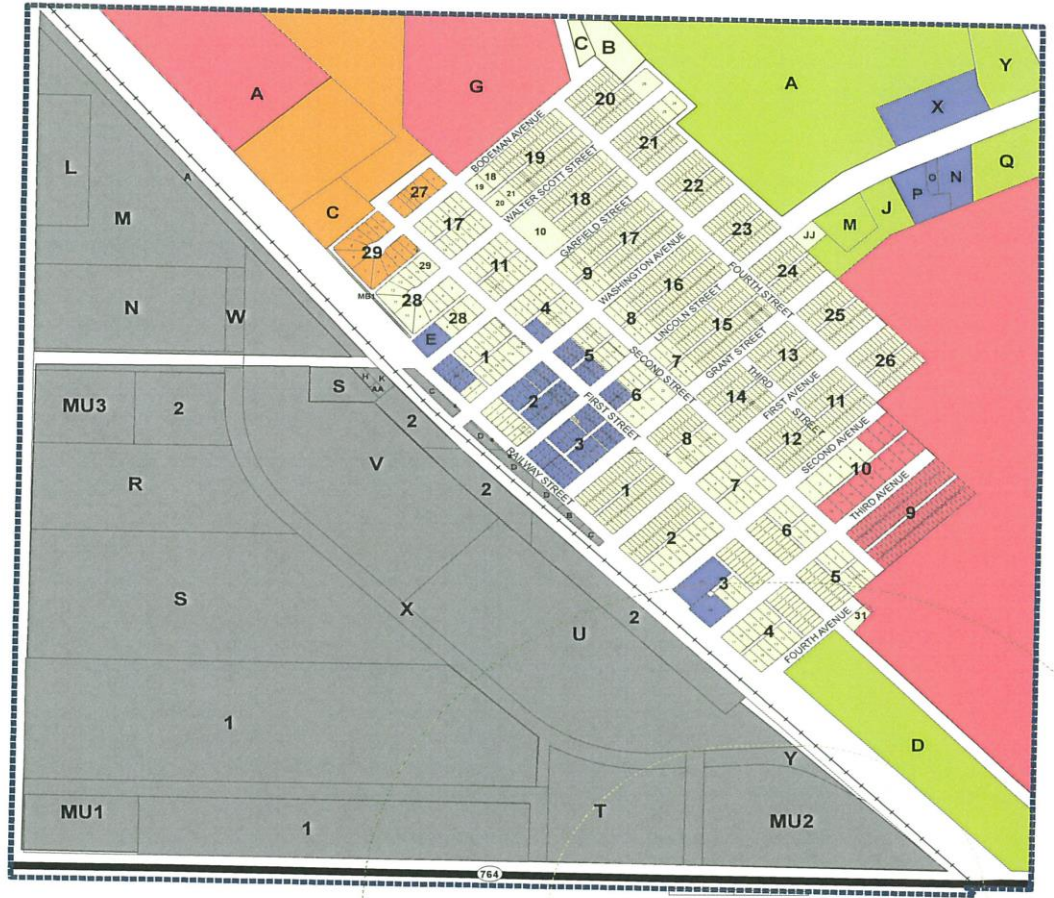
REV.	REVISION	DATE	INITIALS
0	Issued	July 22, 2015	AM - SML - DC
1	FILED	July 25, 2015	AM - SML - DC

Dated at Saskatoon in the
 Province of Saskatchewan this
 17th day of July, 2015.



Saskatchewan Land Surveyor
Altus Geomatics
 Limited Partnership
 www.altusgeomatics.com
 Toll Free: 1-800-445-4233
 COMMUNITY PLANNING

Town of Hanley Land Use Map



- LAND USE**
- Lagoon Buffer (500m)
 - Lagoon
 - Lagoon Buffer (300m)
 - Existing Commercial
 - Existing Community Service
 - Existing Industrial
 - Existing Residential
 - Future Commercial or Industrial
 - Future Residential
 - Other Holding

1:6,888

