

**TOWN OF HANLEY**

**BYLAW NO 13/16**

**A BYLAW TO AMEND THE WATERWOLF GROWTH MANAGEMENT PLAN  
(DISTRICT PLAN)**

The Council of the Town of Hanley in the Province of Saskatchewan enacts to amend the WaterWolf Growth Management Plan (District Plan) as follows:


1. Section 13, Part 10.2.3 Land Use Map be amended to reflect re-designation of as per the Plan of Proposed Subdivision drafted by Daniel Codling S.L.S. of Altus Geomatics, dated July 18, 2016, which is attached as Appendix A and forms part of this bylaw, to Future Residential from Urban Holding.

This Bylaw comes into force and effect on the date of final approval by the Minister of Government Relations.

(SEAL)

\_\_\_\_\_  
MAYOR


\_\_\_\_\_  
ADMINISTRATOR

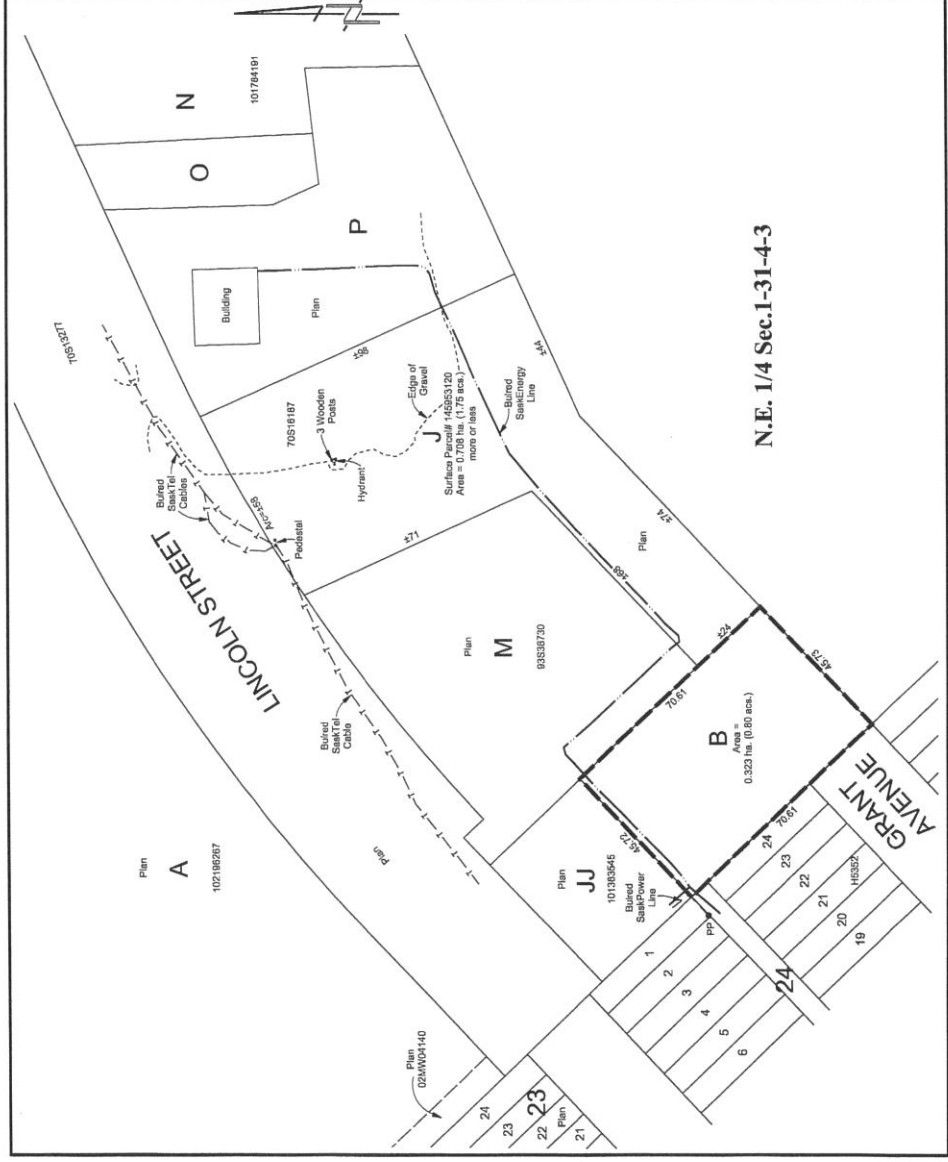
**PLAN OF PROPOSED SUBDIVISION**  
 of Part of  
 Parcel J, Plan 70S16187  
 N.E. 1/4 Sec. 1 - Twp. 31 - Rge. 04 - W3Mer.  
 Town of Hanley  
 Saskatchewan  
 Calvin W. A. Bourassa, S.L.S.  
 2016  
 Scale 1:1000  
**OWNER(S):**  
  
 That's Service Centre (1988) LTD.

Measurements are in metres and decimals thereof.  
 Measurements are approximate and may vary by 10.5m.  
 Area to be approved is outlined in bold dashed line  
 and contains 0.323 ha (0.80 acs).

REV.	REVISION	DATE	BY	INITIALS
0	Issued	July 7, 2016	CB - SM - MM	

JOB No.: 194909 | File: 194909PPR  
 Preliminary Survey, June 27, 2016  
 Dated at Saskatoon in the  
 Province of Saskatchewan this  
 18th day of July, 2016.

Saskatchewan Land Surveyor  
  
 Alkus Geomatics  
 Limited Partnership  
 © 2016 Alkus Geomatics  
 COMMUNITY PLANNING  
 Toll Free: 1-888-465-6233  
 www.alkusgeomatics.com



**N.E. 1/4 Sec. 1-31-4-3**

# Town of Hanley Land Use Map



- LANDUSE**
- Lapin Buffer (50m)
  - Lapin
  - Lapin Buffer (100m)
  - Existing Commercial
  - Existing Community Service
  - Existing Industrial
  - Existing Residential
  - Future Commercial or Industrial
  - Future Residential
  - Other Heating

1:6,888

0 150 300 Meters

